

湖北京骏建筑有限公司
Hubei Vanjoin Building Co.,Ltd.

CREATING HAPPY LIFE



VANJOIN

WALL PANEL & PRODUCTION LINE & PREFAB HOUSE

湖北京骏建筑有限公司
Hubei Vanjoin Building Co.,Ltd.

生产基地：湖北京山经济开发区
Production Base: Jingshan Economic Development Zone, Hubei, China
公司总部：湖北省武汉市桥口区汉西一路保利香槟国际金座14层
Headquarter: Floor 14, Golden Block, Poly Champagne International Building,
Hanxi 1st Road, Qiaokou District, Wuhan, Hubei, China
邮编/Post Code : 430034

电话/Tel : +86-27-82801008 82801001
手机/Mob : 13886181800 13307111299
传真/Fax : +86-27-82801003
邮箱/E-mail : sales@vanjoin.com
网址/Website : www.vanjoinbuild.com

WUHAN · CHINA



湖北威骏集团现拥有湖北京骏建筑有限公司、武汉威骏进出口贸易有限公司、徐州威骏五金工具制造有限公司。
京骏公司作为建筑科技领域的专业制造商和服务提供商，我们致力于将环保、节能的人居环境产品和技术在中国及国际市场推广及创新，并为普及其相关技术和产品在世界各地的应用和实践而不懈努力。

Vanjoin Group now owns 3 branch companies: Hubei Vanjoin Building Co., Ltd., Wuhan Vanjoin Imp. & Exp. Trading Co., Ltd., and Xuzhou Vanjoin Hardware Tools Manufacturing Co., Ltd.

Vanjoin Company, as a professional producer and server in the construction field, we dedicate to the popularization and innovation of environmental and energy-saving human settlement products and technologies in China and international markets. We also endeavor to popularize the application and practice of the relative products and technologies around the world.

About Us

关于我们



·专业的京骏公司将环保、节能的人居环境技术与产品融入中国不同地域及领域，并不断致力于各类技术及产品在世界各地的应用及创新。

Professional Vanjoin company endeavors to make environmental and energy-saving human settlement products and technologies merge into different areas and fields, and devotes to the application and innovation of various technologies and products all over the world.

·市场的声誉和尊敬，来源于京骏公司对技术、产品质量、售后服务品质的不懈努力；来源于对产品的耐用性、适用性、高性价比的不断追求。

The market reputation and respect originate from Vanjoin's unremitting efforts on technology, quality and after-sale services, originate from constant pursuits of products' durability, applicability, and high performance-price ratio.

·服务者的京骏一贯追求为其用户及合作伙伴提供最具价值的问题解决之道。

As a professional service and products provider, Vanjoin constantly pursuit to offer every customer and partner most valuable solution scheme.

创造生活之悦
CREATING HAPPY LIFE



Honest • Professional • Innovative
诚信、专业、创新

Our Working Spirit

我们的工作精神

诚信精神：我们的行为高尚，值得信赖并忠实可靠，我们遵守法律、法规及京骏的工作制度。

Honest : We are with noble behaviors, can be trusted and reliable; we strictly abide by the law regulations and Vanjoin's working system.

专业精神：我们中的每一个人都在通过他的工作为京骏做着贡献，我们具有主观能动性、高度敬业及专业性，有明确的目标，并为实现目标我们不懈努力。

Professional : Every Vanjoin people work and dedicate to our company; we are subjective, initiative, with clear aims and try our best to achieve the aims.

创新精神：我们思考和行动的意义在于不断的改进和革新。

Innovative : Unceasing improvement and innovation are why we act and think.



目录 Contents

- 04 公司简介
Company Introduction
- 06 资质荣誉
Company Glory
- 07 产品介绍
Product Introduction
- 11 产品应用范围
Application of the Panel
- 16 京骏新品推出
Vanjoin New Products
- 18 京骏环保材料系列
Vanjoin Environmental Material Series
- 20 京骏板材安装流程
Installation Flow of Vanjoin Light Weight Compound Sandwich Panel
- 29 整体房屋
Prefab House
- 34 工程案例
Engineering Cases
- 38 京骏板材生产线
Vanjoin Wall Panel Production Line
- 45 来访客户
Our Customers

公司简介

Company Introduction

湖北京骏建筑有限公司是湖北省高新技术企业，是一家集研发、生产、销售、国际贸易为一体的大型建材企业。公司总部位于九省通衢的武汉市，下属生产基地位于湖北京山经济开发区，北倚汉水达三江，南靠“沪蓉”通九衢，交通极其便利。

京骏建筑科技公司专业生产各种建筑用、装饰用隔墙材料，自主研发的EPS轻型复合节能环保、轻质隔音、防水防火、节省空间、节省施工时间、隔热保温等特点，被广泛应用于酒店、写字楼、学校、办公、厂房建设及住宅等场所，其优越的性价比不断赢得众多客户的青睐。

京骏公司有现代化的企业管理机制，各项目专业管理人员，科学的决策体系，完善的质控手段，灵活的经营体制使公司不断发展壮大。现有厂房、仓库40,000平米，其产品通过ISO9001国际体系认证和ISO14000环境管理保证体系认证，完善的测控中心确保产品质量的稳定性，产品销往全国各地，并大量出口至中东、俄罗斯、非洲、南美、澳洲、东南亚等国际市场的。



Hubei Vanjoin Building Co., Ltd. is a high tech building material enterprise specialized in the R&D, production, sales and international trade of new energy-saving light weight wall materials. It is located in Wuhan with production base in Jingshan economic zone, well-located and easy of access.

Vanjoin is specialized in the production of various energy-saving light weight wall materials applied for construction and decoration; Vanjoin light weight compound sandwich panel is with features of energy-saving, light-weight, sound insulation, water proof, fire proof, space-saving, heat insulation and preservation, and fast construction, etc.

It is now widely applied to walls of various high and low buildings such as hotel, office building, school, workshop, residence and so on. The most reasonable performance-price ratio of our products attract lots of customers all over the world.

Vanjoin have modern enterprise management mechanism, professional administrative staff, scientific decision system, perfect quality control, flexible management system, which enhance Vanjoin's unceasing development.

We now own workshop and warehouse more than 40,000m², and our products have passed CE, SGS, ISO9001, ISO14000, BV, National Test, etc.. They have been applied in many domestic major building projects and have been widely exported to UAE, Qatar, Iran, Iraq, Cyprus, Sweden, Russia, Australia, Maldives, India, Philippines, Brunei, Thailand, Brazil, Chile, Uruguay, Bolivia, Colombia, etc.

Weave your dream & Build our homeland! Vanjoin would like to create a new brilliance together with every one of you, our cherished customers and friends!



资质荣誉

Company Glory

CE, ISO, Patent, Philippines Government Test Report (Fireproof, Sound-insulation, single-point hanging force, etc.), National Test Report, Alibaba Assessed Supplier.



产品介绍

Product Introduction

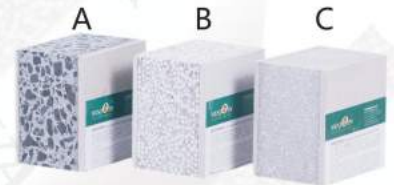
京骏节能板材

Light Weight Compound Sandwich Panel

轻质节能板材是以纤维增强硅钙板或水泥硅钙板作为面板，中间填充水泥、EPS、陶粒、煤粉灰等轻质芯材一次复合形成的一种轻质节能复合板材。本产品可取代红砖、粘土实心砖、空心砖、彩钢夹芯板、石膏砌块、钢丝网架珍珠岩、珍珠岩多孔板等建筑材料，广泛用于各类高低层建筑墙体，如：银行、办公室写字楼、医院、学校、宾馆、娱乐厅、活动板房、旧房改造、家庭住宅以及厂房，均可适用。

The light weight compound sandwich panel is a kind of light weight energy saving compound board,taking fiber reinforced calcium silicon board or cement calcium silicon board as surface panel,with cement,EPS/ceramsite/perlite, sand or fly ash as fillers,to be compounded at one time.The product can replace construction materials like red brick,clay solid brick,air brick,color-coated steel sandwich board,gypsum block,wire spatial grid structure perlite board,perlite porous board,etc.It can be widely applied to various high and low building s such as bank,office building,hospital,school,hotel,shopping mall, amusement hall,portable dwellings,old house reconstruction,family house and workshop,etc.

- A: Ceramcitic Sandwich Panel
- B: EPS Sandwich Panel
- C: Perlite Sandwich Panel



产品名称 Name	规格(mm) Specification(mm)	重量 (kg/m ²) Weight (kg/m ²)	Packing (pcs/m ² per 20' GP)	Application
VJ轻质节能板材 VJ Light Weight Compound Sandwich Panel	2270 × 610 × 60	45 - 48	315pcs/436m ²	Roof
	2270 × 610 × 75	50 - 53	252pcs/349m ²	Interior wall
	2270 × 610 × 90	55 - 58	207pcs/287m ²	Interior/ Exterior wall
	2270 × 610 × 100	60 - 65	189pcs/262m ²	Interior/ Exterior wall
	2270 × 610 × 120	65 - 75	153pcs/212m ²	Exterior wall
	2270 × 610 × 150	80 - 90	126pcs/175m ²	Exterior wall

注：墙板密度，长度可根据客户要求要求进行设计。

Remark: All kinds of panels can be customized by customers' specific requirements, such as density and length of panel.

允许公差(mm) Allowed Tolerance(mm) Length ± 5 Width ± 2 Thickness ± 1 Diagonal ± 2



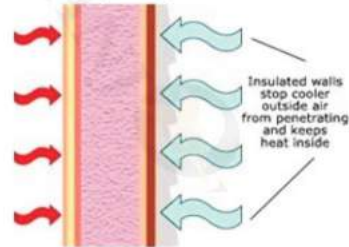
Waterproof



Best hanging strength



Fireproof



Best heat insulation

产品特点
Features



Decorative finishes by tiles, paint or wall paper



Good chemical resistance



Excellent dimensional stability



Good mechanical resistance and rigidity



Easy to install, transport; and low wastage



Light weight but strong



Economical



Non-combustible and fire rated
BS CN
BS 476: Part 22



Good acoustic performance



Resistance to seismic movement



Weatherproof

产品性能指标
Product Performance

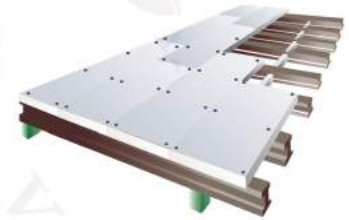
Flexural Strength (longitudinal)	4.27 MPa
Flexural Strength (transverse)	4118 N
Screw Pull Out Tests	tonf 0.1935 kgf 193.50 ibf 426.59
Moisture Movement	0.06%
Moisture Content	9%
Resistance to continuous heating	80° C
Surface Alkalinity	pH 7-10
Non-combustibility (Face boards)	BS EN ISO 1182: 2002 BS476: Part 4 GB8624-1997, Grade A
Heat of combustion (Face boards)	BS EN ISO 1716: 2002
Building regulations classification (Face boards)	Euro Class A1
Fire rated partition	2 hour FRP BS EN 1364-1 BS 476: Part 22 GB/T9978
Water tightness to ASTM C1185	No droplets observed behind the panel. Test of 24 hours at 250mm water head.
Partition stiffness – heavy duty grade (BS 5234: Part 2: 1992, Annex A)	Pass
Resistance to structural damage by multiple impacts from a large soft body –heavy duty grade (BS 5234: Part 2: 1992, Annex E)	No collapse or dislocation
Surface damage by hard body impact – heavy duty grade BS 5234: Part 2: 1992, Annex B	Pass
Effects of door slamming – heavy duty grade BS 5234: Part 2: 1992, Annex B	Pass
Resistance to crowd pressure – heavy duty grade BS 5234: Part 2: 1992, Annex G	No collapse or damage
Heavy weight anchorage (high level wall cupboard) eccentric downward BS 5234: Part 2: 1992, Annex K	No damage or detachment of anchor
Anchorage Load	45kg
Acoustic performance	
-60mm thick	38 dB
-75mm thick	40 dB
-100mm thick	42 dB
-120mm thick	44 dB
-150mm thick	46 dB
Frequency(Hz):2000 Sound Pressure Level (dBm):99.5 Sending Sound Pressure Level (dBm):61.2 Receiving Sound Reduction Index(dBm):48	

产品应用范围
Application of the panel

地板应用系统
Floor System

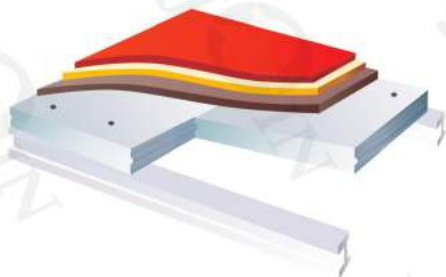
京联轻质节能板可创新应用于地板。该系统除具有隔音，防水，防潮等基本优越性能外，还具有高承重力，抗静电，耐摩擦，高强度，便于电线槽管埋设，耐腐蚀，不变形，不开裂等突出优点，非常适合于加建层楼板，工厂，车间，仓库等领域。

Vanjoin light weight compound sandwich panel can be innovatively used as floor board. Besides the basic characteristics like sound insulation, waterproof, dampproof, this system has the outstanding advantages such as high load-bearing capacity, anti-static electricity, friction resistance, high strength, convenient for wire groove and water pipe inbuilt, corrosion resistance, no deformation, no split, etc., which is much suitable for the fields including the floor plate of additional top floor, factory, workshop, warehouse, etc.



■ 屋面应用系统
Roof System

京骏轻质节能板屋面应用系统为传统屋面建造带来全新的附加值和应用理念。该系统不仅解决屋顶渗透问题，同时具有隔热保温，连接面平整，耐高温等优点。其轻质高强特性减少了屋顶梁柱的应用，降低耗材，增加安全性；其简易的施工和安装流程，大幅缩短施工期，综合性价比高。



Vanjoin light weight compound sandwich panel roof system brings brand-new added value and application idea to the traditional roof construction. This system not only solves the problem of roof leakage, but also has the advantages such as heat insulation, neat joint surface, high temperature resistance, etc. The features of light weight and high strength reduce the use of roof beam-column, reduce the consumption of materials, improve security; its easy construction and installation procedures greatly shorten the construction time, which bring out its high integrated performance-price ratio.



■ 内隔墙应用系统
Interior Partition System

京骏轻质节能板以其优质防火，吊挂力，隔音，隔热，防水，易安装等性能，被广泛应用于高层及超高层建筑的隔墙等特殊位置。

With excellent fireproof, best hanging force, sound insulation, heat insulation, waterproof, easy installation and the like characteristics, Vanjoin light weight compound sandwich board have been widely applying to the special positions like partition panel of high-rise and mega-high-rise buildings.



■ 外墙、别墅应用系统
Villa & Exterior Wall System



京骏轻质节能板随季节气候的变化而自动调节室内空气水分含量的能力，使温度保持在一个恒温水平的生态效果，符合现代住宅建筑发展潮流。广泛应用于各种组合房屋，低层建筑物，复合公寓，别墅及城市住宅。

Vanjoin light weight compound sandwich panel can automatically adjust indoor air and water content with the season and climate changes, which can keep the temperature at an invariable temperature level, and such ecology effect just goes with the tide of modern residential building. It is widely applied to various modular house, low buildings, apartment, villas, and city house, etc.



京骏板材的面板是特制的无石棉和任何无机纤维。当在室内使用电锯或者磨砂机时，建议使用除尘设备以控制粉尘含量。京骏板材设计用于非承重结构，横版或者天花板不可以行走，因为京骏板材的支撑之间不是采用额外负荷设计的。为了避免发生这种危险情况，安装工人安装时应该出示警示牌，提供足够的安全平台。

Vanjoin panel is formulated without asbestos or sepiolite or any inorganic fibres. When using power saws or sanders in a confined space, dust extraction equipment is recommended to control dust levels. Vanjoin Panel is designed for non-load bearing construction. Horizontal boards or ceiling panels must not be walked on as they are not designed to take additional loads between supports; if there is a risk of this occurring, warning notices should be displayed. Fixers must ensure that they work from adequate and safe platforms.

注：所有在这个目录中描述的产品物理性能值是基于标准生产的平均值。这些数字可能会根据测试方法的不同而改变。

Note: All physical performance values of products depicted in this catalogue are averages based on the standard production. The figures may be changed dependent on the test method used.



京骏新品推出

Vanjoin New Products

EPS陶粒混合夹心板

京骏EPS陶粒混合夹心板以水泥, EPS,陶粒, 沙子为主要原料, 与原有的EPS水泥夹心板相比, 强度要更好些, 但又没有陶粒夹心板那么重, 是两者的完美结合。

EPS Ceramicite Sandwich Wall Panel

Vanjoin EPS Ceramicite Sandwich Panel takes cement, EPS, ceramicite, sand as the main raw materials. Compared with EPS sandwich panel, it is stronger on strength, at the same time, it is not so heavy as ceramicite sandwich panel. It is the perfect balance of both two panels, which gives you wider choice to meet your different needs.



软瓷系列产品

软瓷系列产品包含软瓷砖, 软性瓦片等。威骏软瓷砖是一种利用新代高分子复合技术, 将柔性元素加入到瓷砖中, 改变传统瓷砖冰冷坚硬质感, 更加柔性更加温馨的新型建筑装饰材料, 主要用于内外墙装饰、造型等领域。常见尺寸为: 1200*600mm, 600*600mm, 600*300mm, 可以按照倍数切割成小块的, 满足不同需求。尺寸可根据客户需求定制。

Soft Ceramic Series Products

Soft ceramic series products include soft ceramic tiles, soft tiles, etc. Vanjoin Soft Ceramic Tile is a new type building decoration material, which takes advantage of modern polymer composite technology, put flexible elements into ceramic tiles, changed traditional ceramic tiles' cold and hard texture, formed a more soft gentle and fragrant building material. It is mainly used for the decoration and modeling of interior and exterior walls, etc. The most common size are 1200*600mm, 600*600mm, 600*300mm, which can be cut into smaller pieces to meet various needs. Custom-made size can be provided.



京骏环保材料系列

Vanjoin Environmental Material Series

硅钙板：可以用来作为京骏板材的外板，以及地板和天花板。硅酸钙板的优点是环保，耐用性，强度高，寿命长，防水，防潮。硅酸钙板已经成为一个领先的建筑材料，用在日常现代化建设中。

Calcium Silicate Board can be used as the outer sheathing to our wall, floor and ceiling panels. The advantages of calcium silicate board are environmental protection, durability, high intensity, long-life, waterproof and moisture proof. Calcium silicate board has become a leading building material used in daily morden construction.



聚苯乙烯颗粒：是含有发泡剂的可发性聚苯乙烯通过发泡而形成的颗粒状。其优点是保温，耐冲击性，以及良好的加工能力。EPS可广泛用作隔热材料，包装材料及其他特殊用途。EPS的特点是密度低，重量轻，减少建筑物的负重，隔热保温性能好，耐火，环保和安全。

Expandable Polystyrene Styrofoam Beads are expandable polystyrene containing blowing agents, and in the form of beads. The advantages of EPS are thermal insulation, impact resistance, and good process ability. EPS can be widely used as thermal insulating materials, packing materials and other special purpose articles. The merits of EPS are low density, light weight, reducing the deadweight of a building, excellent capacity of heat insulation and preservation, fire-resistant, environmental protection and safety.



京骏板材安装辅料

Vanjoin Panel Installation Accessories

玻纤挂网

用途：弥补缝隙，防止板与板之间裂缝，同时具有保温功能。通常和抗裂砂浆一起使用。
规格：1m(宽) * 95m(长) / 卷

Fiberglass Mesh

Features: Anti-cracking properties, thin, flexible and very durable.
Usage: Mainly used for interior wall and exterior wall's anti-cracking and thermal insulation, usually used along with anti-crack mortar for whole wall system.



Steel Bar

Usage: tapping into the wall panels to fix the wall panels.
Size: dia.6mm; length 20cm



PU Foam

Usage: fill the gap between the wall and doors and other things



Cement Mortar

Usage: joint the wall panels, used between tongue and groove channels.
Weight: 40kgs/bag



Anti-Crack Mortar

Usage: the level coating for the exterior wall or anti-crack solution for the exterior wall.
Weight: 40kgs/bag



Putty Powder

Usage: used for filling and leveling up to make the surface of the wall smoothly
Weight: 20kgs/bag

京骏板材安装工具

Vanjoin Panel Installation Tools



Electrical Cutter
切割机



Electrical Hammer
电锤



Trowel
泥刀



Level Instrument
水平放线仪



Level Ruler
水平尺



Measuring Tape
卷尺



Hammer
锤子

京骏板材安装流程

Installation Flow of Vanjoin Light Weight Compound Sandwich Panel

轻质复合夹芯条板安装流程

Installation flow of light weight compound sandwich panel



- 1、放线、运板就位 在安装墙板的轴线分别上下弹出板厚的双线，根据需要的规格轻松抬到墙边。
1. Setting the line and carrying the board in position: Eject double lines of board thickness up and down the axes of installed wall board, easily carry to the side of wall according to the specification needed.
- 2、锯板 根据墙体的规格任意用手提电锯切割。
2. Sawing board : Using hand-hold electric saw to cut freely according to the wall specification.
- 3、上浆 先在两块板的榫边水泥一道，再将聚合物砂浆任意抹在一块榫边上。
3. Sizing : Sizing cement on tenon side of two boards, then spread polymer mortar on one tenon side casually.
- 4、安装 将准备安装的条板搬到装拼位置，用铁撬将墙板校正，用力撬靠紧，使聚合物砂浆从接颖挤出至饱满，再用木楔将其临时固定。
4. Installation : Carrying the board prepared to be installed to the installation place, correcting the wall board by gavelock and making it close tightly, and let the polymer mortar squeeze out into full and fixing it with a chock temporarily.
- 5、校正、固定 用2米或2米以上的靠尺检查垂直、平整校正，再用Φ6mm或Φ8mm带肋的钢筋加建筑胶固定。
5. Correcting, fixing : Using a guiding rule of two meters or longer to check verticality and leveling correction, then using Φ 6mm or Φ 8mm reinforcing steel bar with ribs adding with construction sealant to fix.
- 6、灌浆、补浆 将校正后的墙体墙壁板用聚合物砂浆补满、刮平、上下间隙大的用细石混凝土填补。
6. Grouting and filling starch : Filling and strickling the corrected wall board with polymer mortar, filling the big gap with pea gravel concrete.

7、贴网格布 在灌缝聚合物及墙体全部定型后，在整个墙面（包括接缝处）用抗裂砂浆将玻纤挂网贴上。

7. Sticking fiberglass mesh: After the polymer (for filling the gaps) and wall are all shaped, sticking fiberglass mesh on the whole wall with anti-crack mortar.

8、安装电线、开关 将要设暗线、开关盒位置放线，再用手提电锯切割开槽，安装完毕后用聚合物砂浆补平。

8. Installing electrical wires and switches: Setting lines on the places needing to be set with concealed wire and switch box, then cut a groove by hand-hold electric saw, filling with polymer mortar after installation.

9、装门框 在安装好的墙上预留门窗洞口，随意用夹板或线条锚固。

9. Installing doorcase: Preparing door and window holes on the installed wall, anchoring by splint or lines.

10、面饰涂料、墙纸 在装好的墙体上，不需抹灰，直接刮腻子，再刷涂料或贴墙纸。

10. Facing coating and wall papers: Scraping putty directly without plastering on the installed wall, then brushing coating and sticking wall paper.

11、饰面瓷砖、装饰板 在装好的墙体上不需抹灰则可随意粘贴瓷砖或其他木饰面板。

11. Facing ceramic tile, decorative sheet: Sticking ceramic tiles or other wood facing panels casually without plastering on installed wall.

12、电器安装 在装好的室内随意安装灯具、家具、空调、可钉可挂。

12. Electric apparatus installation: Install lights, furniture, air-conditioners casually on installed room, can be nailed or hanged.



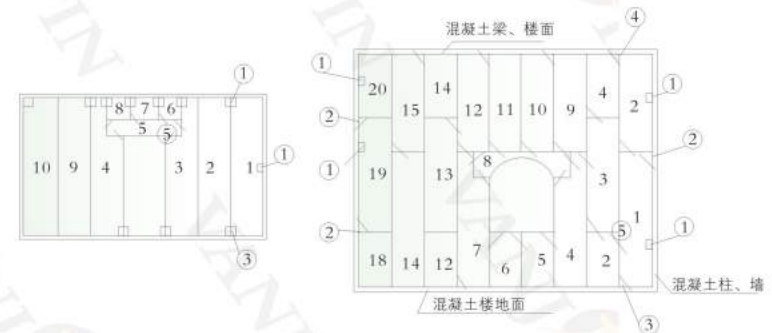
注：1-6为板材安装内容，7-12为其他单位后续施工内容。威骏公司全权负责1-6项安装内容。

Notes: 1-6 is about panel installation, 7-12 is about follow-up construction of other projects. Vanjoin is solely responsible for 1-6 installation content.

■ 安装节点图

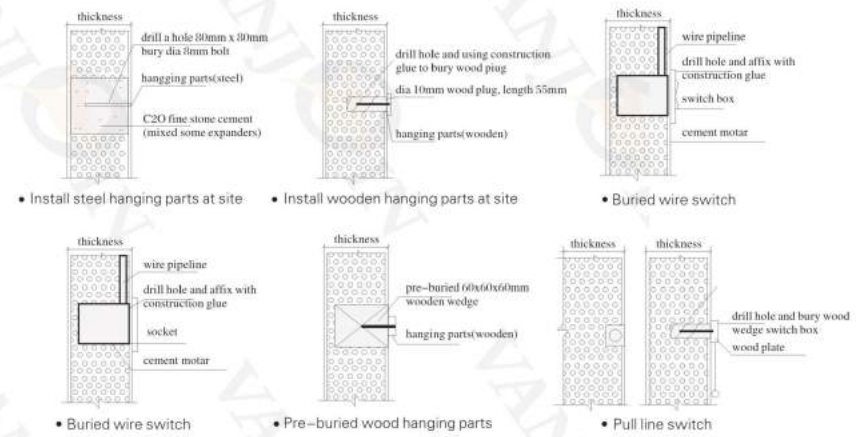
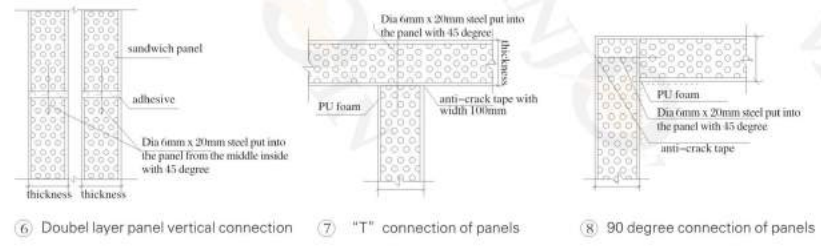
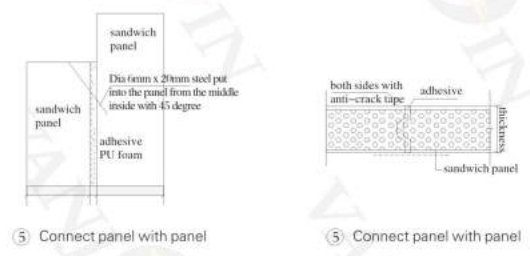
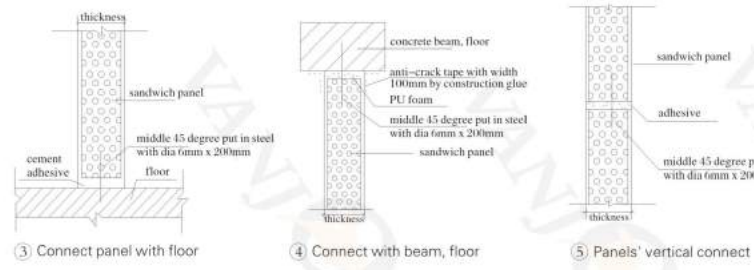
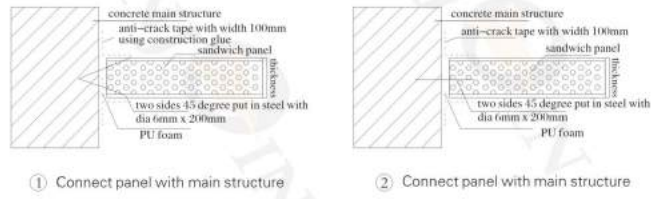
Installation Node Diagram

Installing of light weight compound sandwich panel as interior wall on concrete structure

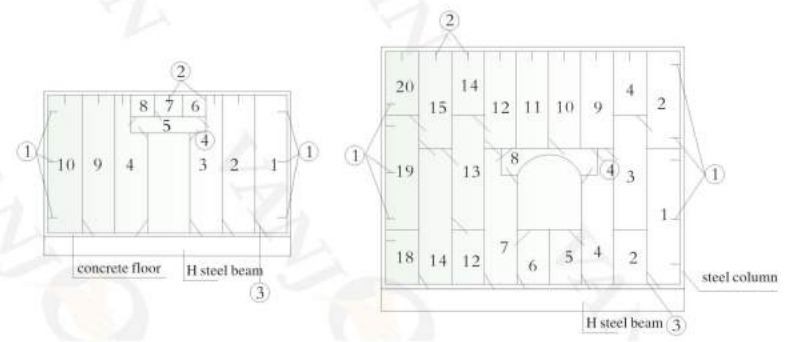


1. Installation sequence: 1, 2, 3, 4, 5, 6, 7, 8, ...
2. Sticking anti-crack tape on joints if all wall panels decorated with painting (construction glue for interior wall, painting for exterior wall)
3. The fitting of door and window accords with concrete air block or normal wall material.
4. Using iron fastening on the beginning and ending of each axis, and reseving expansion joints, sealing with PU foam. Using adhesive to connect each board and filling full adhesive. Reserving expansion joints if the length of the wall over 3m, the distance between the two joints should be less than 3m, the width of the joints 8-10mm is better, and filling with PU foam.

Installing of electrical switch and socket



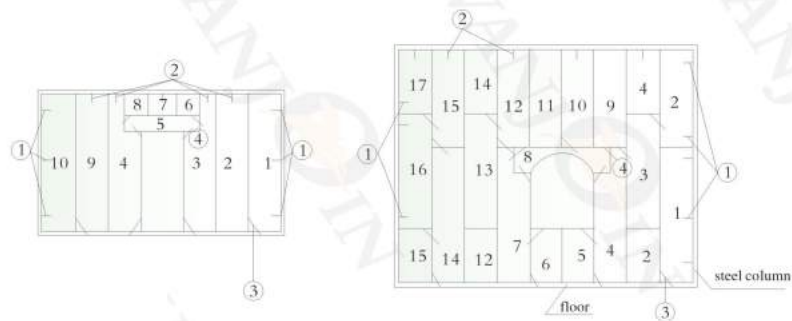
Fitting of light weight compound sandwich panel as interior wall on concrete structure



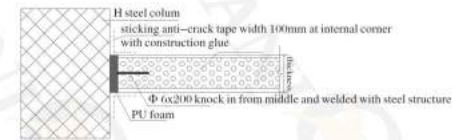
1. Installation sequence, 1,2,3,4,5,6,7,8.....
2. Sticking anti-crack tape on joints if all wall panels decorated with painting (use construction glue for interior wall, painting for exterior wall)

- The fitting of door and window is the same as concrete gas block or other ordinary wall materials.
- Fix the both ends of each axes with iron parts and reserve extension gap, and fill the gap with PU foam, connect the panels with cement adhesive.
Leave the extension gap in middle if the wall length exceeds 4m, every two extension gaps with distance less than 3m, gap width is 8mm-10mm, and filled with PU foam, the external wall to be covered with waterproof glue.
- All the joints between panel and floor or panel and steel beam to be filled with PU foam.
- The joint between panels also can be reserved and filled with PU foam.

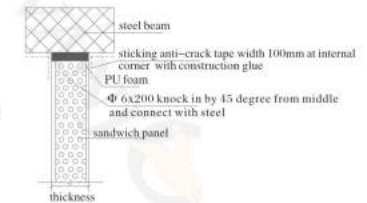
Fitting of light weight compound sandwich panel as internal wall on steel structure(aseismatic)



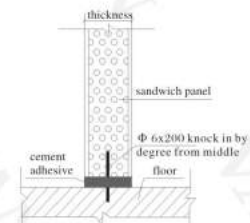
- Installation sequence, 1,2,3,4,5,6,7,8.....
- Sticking anti-crack tape on panels' joints if all wall panels decorated with painting (use construction glue for interior wall, painting for exterior wall)
- The fitting of door and window is the same as concrete gas block or other ordinary wall materials.
- Fix the both ends of each axes with iron parts and reserve extension gap, and fill the gap with PU foam, connect the panels with cement adhesive.
Leave the extension gap in middle if the wall length exceeds 4m, every two extension gaps with distance less than 3m, gap width is 8mm-10mm, and filled with PU foam, the external wall to be covered with waterproof glue.
- Fill the gap between panel and steel structure with PU foam or construction glue.



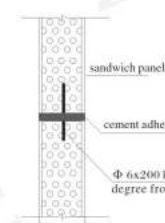
① Connect panel with steel structure



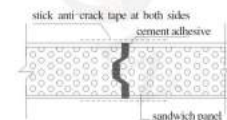
② Connect panel with steel beam



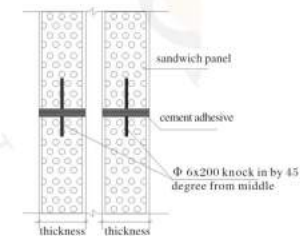
③ Connect panel with floor



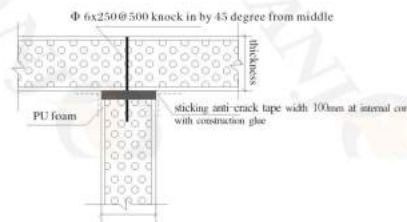
④ Connect panel with panel



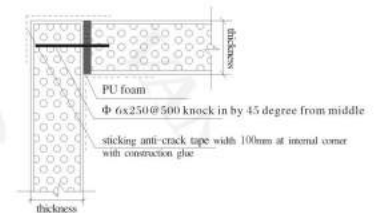
⑤ "—" Connect of panels



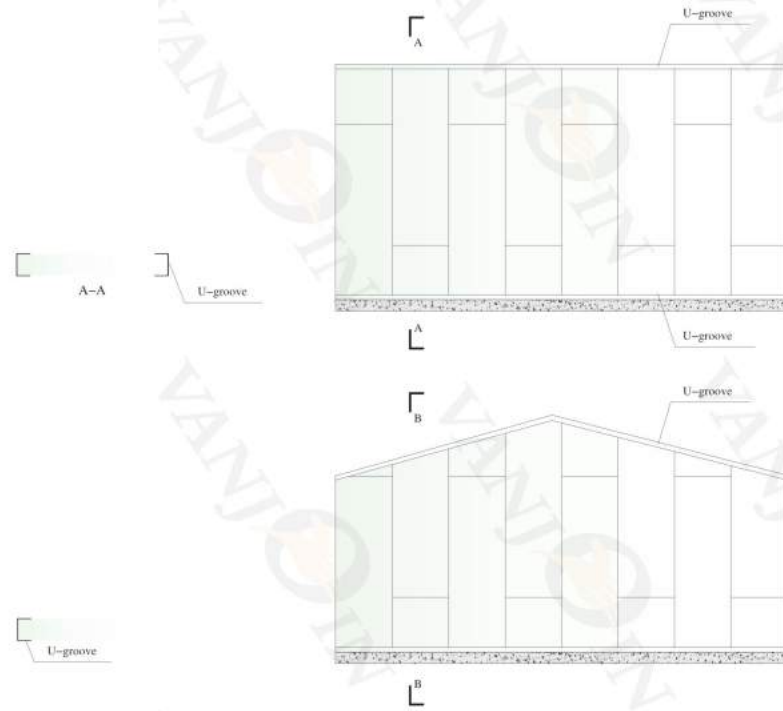
⑥ Double layer panel vertical connect



⑦ "T" connect of panels



⑧ 90 degree connect of panels



• Special wall installation



整体房屋 Prefab House

京骏整体房屋的屋面系统、地面系统，墙体全部由京骏节能环保板材建造，具有快速、美观、环保、耐用的优点。房屋户型和室内装饰可根据客户要求进行设计，提供整套设计安装图纸，并派工程师指导安装，为客户提供交钥匙工程。

The roof system, floor system and wall body of Vanjoin prefab house are all made by vanjoin light weight compound sandwich panel, it has the advantages of fast construction, beautiful, durable and environmentally-friendly. The house's design & decoration can be made according with customer's requirement and we will provide complete designing & installation drawings, installation guide and send engineers to provide with turnkey projects.

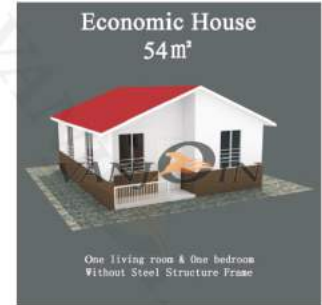


Main Material					
Steel Structure and Wall Body		"U" shape steel frame	Roof & Ceiling	1. Steel roof truss	C80x40x15x2
	1. Wall structure frame	Concrete frame		2. Roof Panel	Light weight compound sandwich panel
	2. Exterior wall	Light weight compound sandwich panel		3. Roof tile	Strip slate
	3. Exterior wall decorative board	Imitation brick texture wall		4. Ceiling	Decorative Mgo board or Gypsum board
	4. Interior wall	Light weight compound sandwich panel	Floor	1. Floor lateral support	Round steel or concrete
	5. Interior wall decorative material	Emulsion paint or tile		2. Floor girder	"H" steel
	6. Panel used in kitchen & toilet	Light weight compound sandwich panel		3. Floor panel	Light weight compound sandwich panel
	7. Corner post	Square tube or concrete		4. Floor decorative board	Tile or composite wooden floor panel
8. Wall Pillar	Rectangular tube or concrete		5. Toilet ground tile	Polished tile	

Note: Above data is provided for reference. The real figures are based on the customer's requirements and test report.



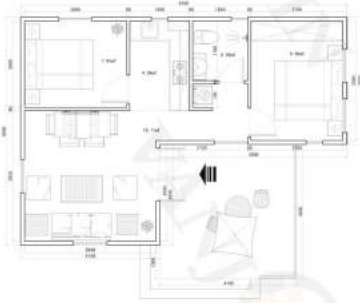
54m²
1 bedroom,
living room,
dining room,
kitchen,
1 bathroom



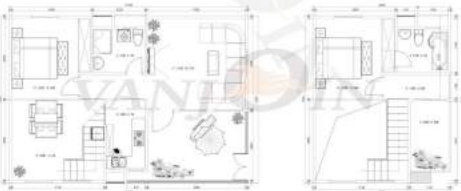
72m²
2 bedrooms,
living room,
dining room,
kitchen,
1 bathroom



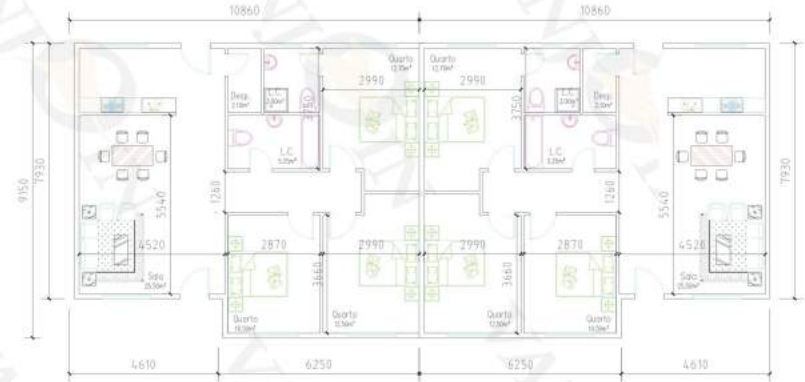
69.3m²
2 bedrooms,
living room,
dining room,
kitchen,
1 bathroom



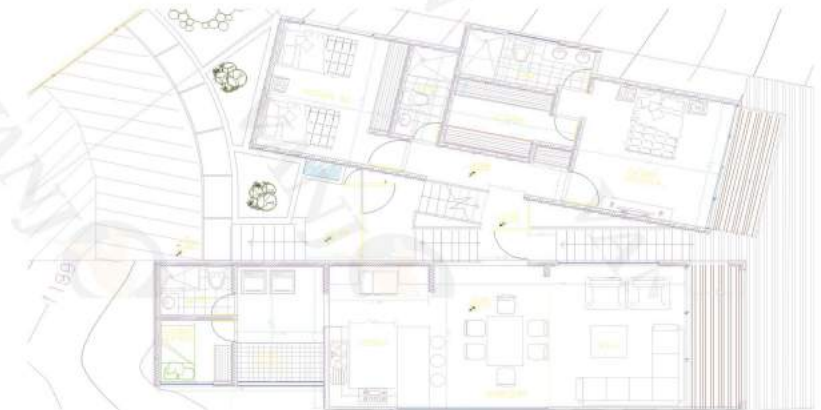
127.8m²
2 bedrooms,
living room,
dining room,
kitchen,
2 bathrooms



198.7m²
6 bedrooms
2 living rooms, dining room
2 kitchens
4 bathrooms



260m² apartments
Custom made
2 or 3 bedrooms
2 living rooms, dining room, kitchen
3 bathrooms



工程案例
Engineering Cases

Abu Dhabi Project



Abu Dhabi Project



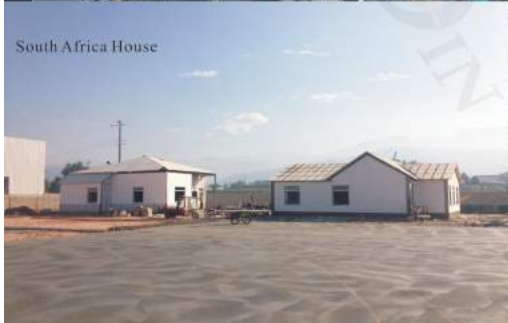
Iran Kish Island



Philippines Project



South Africa House



New Zealand Villa



Australia Villa



Abu Dhabi Project



Abu Dhabi Project



China Shopping Mall



Hunan Five-Star Hotel



Sunsy Hotel



Grace Hotel



South Africa Simple House

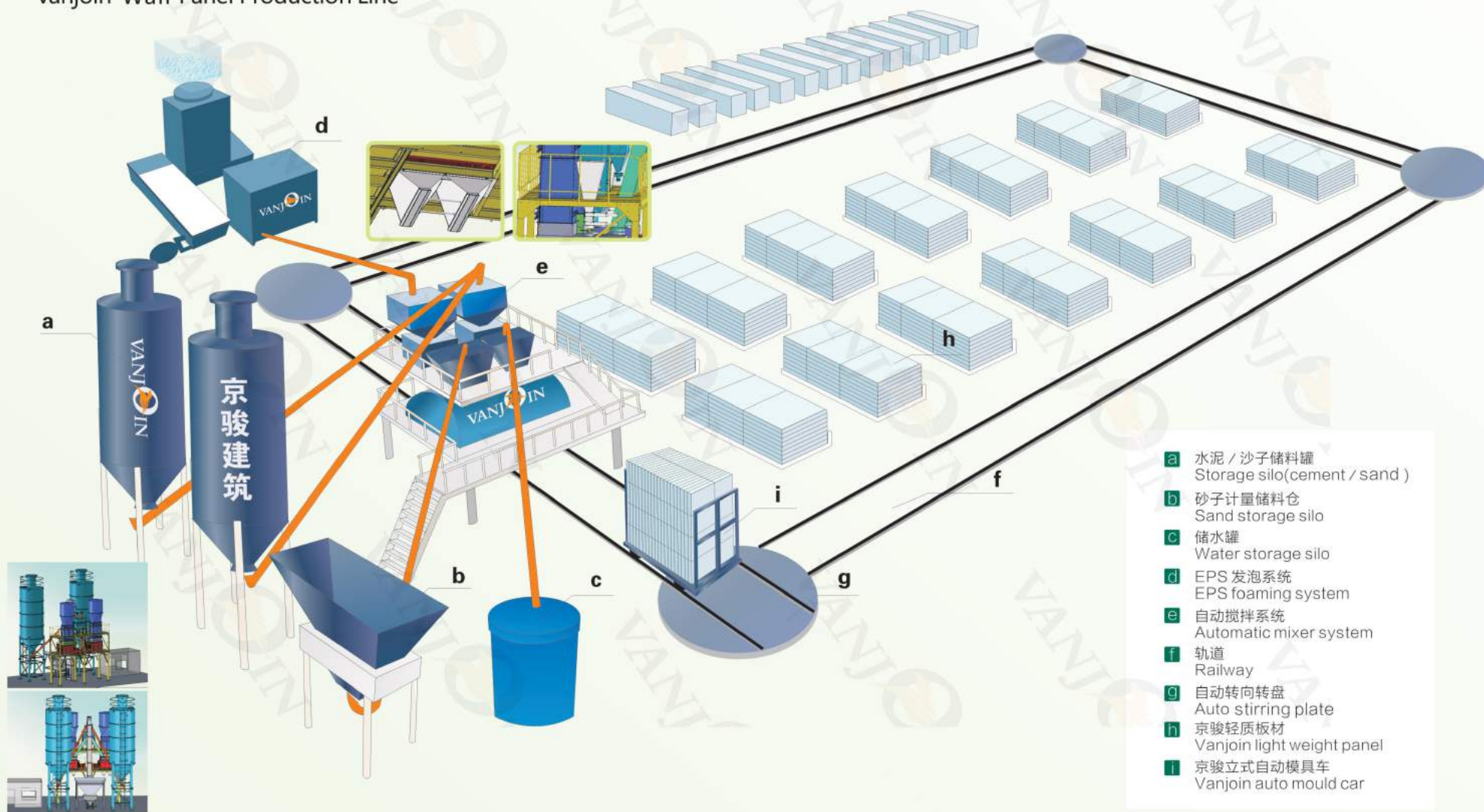


Maldives House



京骏板材生产线

Vanjoin Wall Panel Production Line



发泡系统
Foaming System



Electric boiler

锅炉 Boiler

该设备主要为发泡设备提供蒸汽用来发泡EPS泡沫，我司采用电加热锅炉，该锅炉利用电能加热给水以获得规定参数的蒸汽或热水，锅炉的热效率高于98%。锅炉以电为热源，现场清洁无污染。

The equipment is mainly used for supplying steam for the foaming equipment to foam EPS foam, We used electric heating boiler, Which is heating water by electric energy to obtain the specified parameters of steam or hot water, The boiler's thermal efficiency is higher than 98%. Electricity is used for the boiler to heat, clean and pollution-free at site.

注：京骏公司可按照客户需求提供燃气和燃油锅炉。

Remark: Oil and gas boilers are also available at customers' request.

EPS发泡机 EPS Foaming machine

主要特点 Main Features:

- 1.该机器采用PLC和触摸屏控制，自动进料，电子称量，温度控制，料位控制以实现自动化生产。
- 1.The machine adopts PLC and touch screen control, automatic filling, electronic weighing, temperature control, material level control to realize automatic production.

- 2.该设备包括螺旋输送机 and 电子计量系统。
2. The machine is complete with Screw Conveyor and Electronic Weighing system.
- 3.封闭恒温发泡仓具有热效率高，节省蒸汽等特点。
- 3.The closed constant pressure foaming barrel features of high heating efficiency and saves steam.
- 4.高精度的指导减压阀控制温度和封闭仓的蒸汽压力，确保阀门输出压力的连续性，并将内部温度控制在±1%以内，从而保证泡沫材料大小均衡，避免了因温度控制不当引起的泡沫颗粒成团或结块。
- 4.High precise guiding pressure reducing valve controls the temperature and steam pressure of the closed barrel, ensuring the outcome pressure of the valve constant and the inner temperature controlled within ±1%, which keeps the foamed material equal and prevents the bead agglomerate because of the bad temperature control.
- 5.用光电或者振动传感器来控制料位，确保密度公差在±3%以内。
- 5.With photoelectric or vibration sensor to control material level, ensuring density tolerance within ±3%.
- 6.该机配置了流化床干燥机，包含烘干，自动筛选和传送物料进储料仓。
- 6.The machine is equipped with fluidized bed dryer, including drying, automatic sieving, depluming and material conveying to silos.
- 7.大多数组件是世界著名品牌，性能可靠，质量稳定，使用寿命长，维护成本低。
7. Most components are of world-famous brands, with reliable performance, stable quality, long service life and low maintenance cost.
- 8.该机器可实现初级和第2次发泡。
8. The machine can realize the primary and second expansion.

技术参数 Technical Parameters

Item	Unit	PSF-Q1400JR
Diameter	mm	1400
Shell height	mm	2000
Volume	m ³	3
Useable volume	m ³	2.8
Steam pressure	mpa	0.6-0.8
Compressed air pressure	mpa	0.6-0.8
Density	kg/m ³	12-40
Throughput	kg/h	150-600
Connected load	kw	14.87
Overall dimension	mm	4500*2150*2950
Machine weight	kg	2500

搅拌系统 Mixing System



结构及工作原理简介 Structure & Working Principle

该搅拌站通过全自动控制系统可实现自动搅拌及出料、自动供给水泥、自动供砂、自动供水、泡沫材料自动供给、添加剂自动供给等功能。

This concrete mixing station, through full automatic control system, can realize the functions like automatic mixing and discharging, automatic supply cement, sand, water, foam materials, and additives, etc.

整机主架：采用型材焊接而成的两层楼设计。

Body frame: two-storey design by adopting section bars welded together.

搅拌系统：采用2台JS750双卧轴强制式搅拌机，分开出料。

Mixing System: Use 2 sets JS750 Double-horizontal-shaft Compulsory Mixing Machine, discharging separately.



水泥自动供给系统：由两台60吨的水泥仓储存水泥，水泥仓设有上下料位计，自动除尘系统，内外爬梯，防爆阀门，破拱等装置。水泥供给采用2台螺旋输送机，2台水泥计量称，1台分料机及2台蝶阀等控制。

Automatic Cement-Supply System: Use 2 sets 60-ton cement storage to store cement; the cement storage has up-down level gauge, automatic dust removal system, inside and outside ladders, explosion-proof valve, arch breaker, and other devices. Cement supply is controlled by 2 sets screw conveyors, 2 sets cement batching devices, 1 set divider and 2 sets butterfly valves.

自动供砂系统：砂的储存及计量采用5立方的配料斗完成，

提升采用一台斗提机及一台分料装置全封闭式向两台搅拌机分别供料，向储料仓供料由用户自购铲车完成。

Automatic Sand-Supply System: the storage and measurement of sand are finished by 5m3 batch hopper; hoisting is realized by 1 set bucket elevator and 1 set sub-feeding device, totally-enclosed feeding to two mixers respectively. The feeding for storage silo is finished by the user by purchasing forklifts.



自动供水系统：由两台水泵分别向两个水计量装置供水，水计量装置在达到设定值之后自动向搅拌机供水，总量大小人工预先设定，水池客户自建。

Automatic Water-Supply System: 2 sets water pumps supply water to two water measuring devices respectively; after reaching the set value, water measuring devices supply water to mixers automatically. The total volume is pre-programmed, and user need to build the water pool.

泡沫材料自动供给系统：采用体积计量方式计量，卸料通过程序设定自动完成。主体由1个5立方储料仓、1个1立方计量仓及两块卸料门组成。

Automatic Foam materials-Supply System: calculate by volume measuring method, and discharge work is automatically finished by preset program. The body of this system is composed of one 5 m3 storage silo, one 1 m3 measuring silo and two discharge doors.

添加剂自动供给系统：采用体积计量方式计量，由2台1立方储料仓及两台2台流量控制阀门组成，通过控制系统控制完成自动供料。

Automatic Additives-Supply System: calculate by volume measuring method, and this system is composed of 2 sets 1m3 storage silos and 2 sets flow control valves, completing automatic material-supply by control system.

自动控制系统：由高压控制柜，低压控制柜，显示屏、工控机、控制软件、电路、气路系统组成。可实现一键式操作完成整道工序控制。还可以根据客户要求增加监视系统。

Automatic Control System: composed of high-pressure control cabinet, low-voltage control cabinet, display screen, IPC, control software, circuits, air channel. One-key operation allows complete control of the whole procedure. Additional monitoring system can be added at customer's request.

立式自动模具车
Vertical Automatic Sandwich Panel Mould Machinery



该设备与传统卧式模具车相比，具有产量高、收益大等特点，适合年产量十万平方以上规模的板材生产。
This Mould has high output and returns, low input, high reach in production output of 100,000 square meters annually.

VJ-HT2270						
Name		Main Parameters				
Overall Dimensions (Length x Width x Height)		3180x1380x3480mm				
Weight		2800KG				
Mobie Power(KW)		2.2				
Mobie Speed(m/min)		≤60				
Main Components	Host		Chassis assembly(power device), former stands, after stands, after plate, rod			
	Accessories		Pressing Plate, side mould			
Production Information	Thickness (mm)	Width (mm)	Length (mm)	Quantity (pcs/set)	Area (m ² /set)	Raw Material (m ³)
	60	610	2270	60	83.0	4.15
	75	610	2270	50	69.2	4.50
	90	610	2270	42	58.1	4.66
	100	610	2270	40	55.3	4.98
	120	610	2270	34	47.0	5.17
	150	610	2270	28	38.7	5.42
180	610	2270	22	30.4	5.77	
Remarks	Two transition car, production line conversion use, One set cheer machine, spray release agent use, Pour table, track					

模具车高度可更具客户的要求进行设计。
The height of the mould can be customized by customers specific requirements.



来访客户 Our Customers





创造生活之悦
CREATING HAPPY LIFE



湖北京骏建设有限公司
Hubei Vanjoin Building Co., Ltd
Tel: +86-27-82801008 82801001
Mobile: 13986181800 13307111299
Fax: +86-27-82801003
E-mail: sales@vanjoin.com
Website: www.vanjoinbuild.com

